



## Numara<sup>®</sup> Track-It!<sup>®</sup> Barcode

Numara Track-It! Barcode makes accurately identifying, validating and transferring any asset within the Track-It! Inventory module quick and easy. Developed in response to customer demand, Track-It! Barcode integrates seamlessly into Numara Track-It!, and allows users to track all assets, even those that cannot be found via discovery.

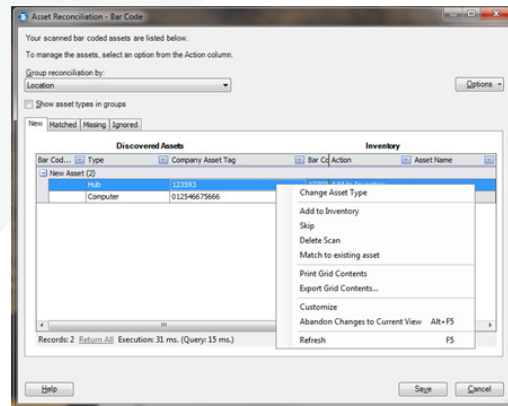
### Product features:

- Track-It! Barcode is quick and easy to set up. Out of the box, you can be up and running in minutes.
- Synchronize physical inventory from the barcode scanner with automatically discovered assets in Track-It!

If you have a few PCs under management or thousands of assets to track; if you are conducting a physical audit; if you're budgeting for the maintenance, upgrade, replacement and usage of your assets or if your organization simply requires routine physical inventory, Numara Track-It! Barcode can help.

### Benefits

- Quickly Input Information for IT Asset Management and Inventory Control
- Dramatically Improve Data Accuracy
- Track Any Asset Quickly and Easily
- Gain visibility and control of all of your company's assets
- Automate Manual Processes
- Stay Compliant



### Track-It!<sup>®</sup> family

- Ti HelpDesk
- Ti Change
- Ti Inventory
- Ti KnowledgePaks
- Ti Remote
- Ti Barcode
- Ti PC Migrate
- Ti Survey

### To get started, simply:

1. Upgrade or purchase the latest version of Numara Track-It! with the Barcode add-on
2. Order your Barcode scanners and labels

### For Speed and Accuracy... The Right Tools Make the Difference

Numara Software is dedicated to working with our customers in a variety of different industries around the globe, to deliver cost-effective solutions to efficiently and effectively manage your business.

### Supported Barcode Devices

Barcode scanners may be purchased from our partner, Portable Technology Solutions (Note: Microsoft ActiveSync is required). A list of supported scanners can be found at: <http://www.numarasoftware.com/track-it/barcode/>